

## Innovations in the current version

*On-Site Photo 2010* offers extensive improvements for operating the program. Basically each process and each dialog has been optimised. The result is a clear and user-friendly software. The attractive user interface which was developed in cooperation with designers is presented in warm colours. It harmonises well with the new functions and features.

### Highlights

- ▶ Compatible with Windows 7
- ▶ Assistant
- ▶ Multi-processor support
- ▶ More natural colours
- ▶ Enhanced representation
- ▶ New module Photo Montage
- ▶ Importing of PDF files

### Assistant

An Assistant guides the user step-by-step through the project. In the Assistant, photos and plans are prepared using appropriate functions for the work with *On-Site Photo 2010*.

*Assistant with lens correction*

### Lens correction

The lens correction is one step within the Assistant of *On-Site Photo 2010*. Due to the multi-processor support the lens correction with image preview is performed in real time now. This makes it easier for the user to achieve a good result.

### Design interface

The user interface of *On-Site Photo 2010* developed together with designers provides more functions for a direct, comfortable access. Colours, textures and images can be used more easily. Rarely used function areas – e.g. Excel online – are started via the main menu. This means less work for the user interface.

### New mouse pointer

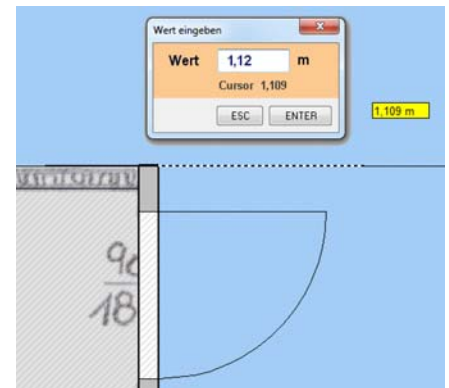
The presentation of the mouse pointer allows to directly identify the current drawing mode. During the axis-parallel construction the pointer is displayed in yellow and with a rectangular angle. In free construction mode the pointer is white.



*Mouse pointer: orthogonal and free construction*

### Direct input of values

For all drawing functions in *On-Site Photo 2010* a value can be directly entered. In case the user enters a figure during construction, a dialog for the input of values will open automatically.



*Enter values directly when drawing*

### Parallel contours

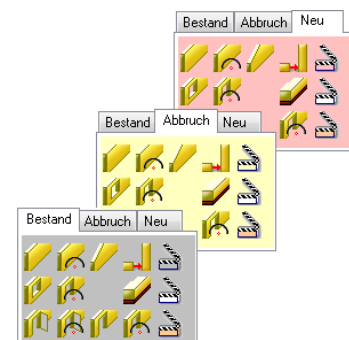
*On-Site Photo 2010* offers a new drawing function "parallel polygon" allowing to comfortably draw, e.g. casings and borders.



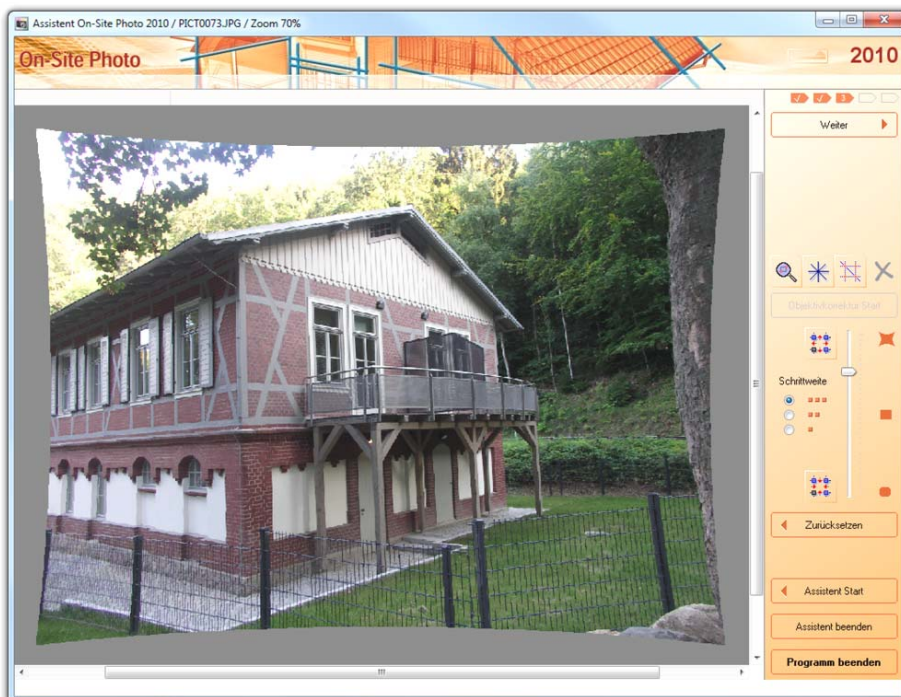
*Parallel polygon*

### Extended drawing functions

The work areas Facade, 3D components and Solar Modules were newly designed and comprise the extended drawing functions. The work area 3D components includes three new categories: existing element / demolition element / new element. Each work area and each category is automatically and separately utilised.



*3D components with three categories*

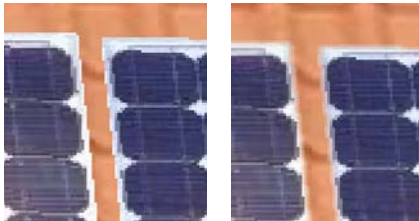


## Innovations in the current version

The reports have been optimised and clearly show the relations between gross and net values.

### Enhanced representation

All drawing elements are shown with antialiasing. **On-Site Photo 2010** supported by texture-smoothing and natural colours generates optical representations of high quality. The representation quality can be adjusted to the PC performance in the program settings.



Antialiasing: Version 2008      Version 2010

### Natural colours

A new colour calculation allows to calculate colours faster and to improve the representation quality.



Transparent colours and textures in use

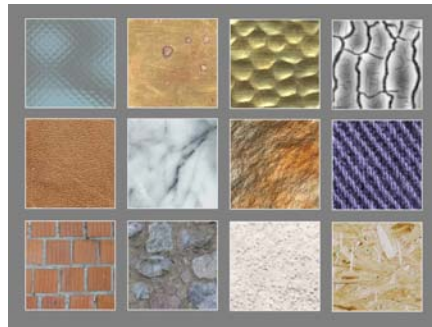
### Textures

**On-Site Photo 2010** supports the use of 450 included textures thanks to its new texture library. The textures are ordered by topics and are directly allocated in the feature dialogs.

### Individual surface design

Each surface can be displayed with one of the nine default standard fillings or an individual filling. The fillings optionally consist of patterns, Windows

colours, Brillux colours, textures or images.



Regrouped textures

### Reports

In **On-Site Photo 2010** the reports are not generated based on the representations. The program offers new utilisation groups for controlling the reports. Each group can be designated individually. **On-Site Photo 2010** automatically groups the drawing elements according to the group they belong to.

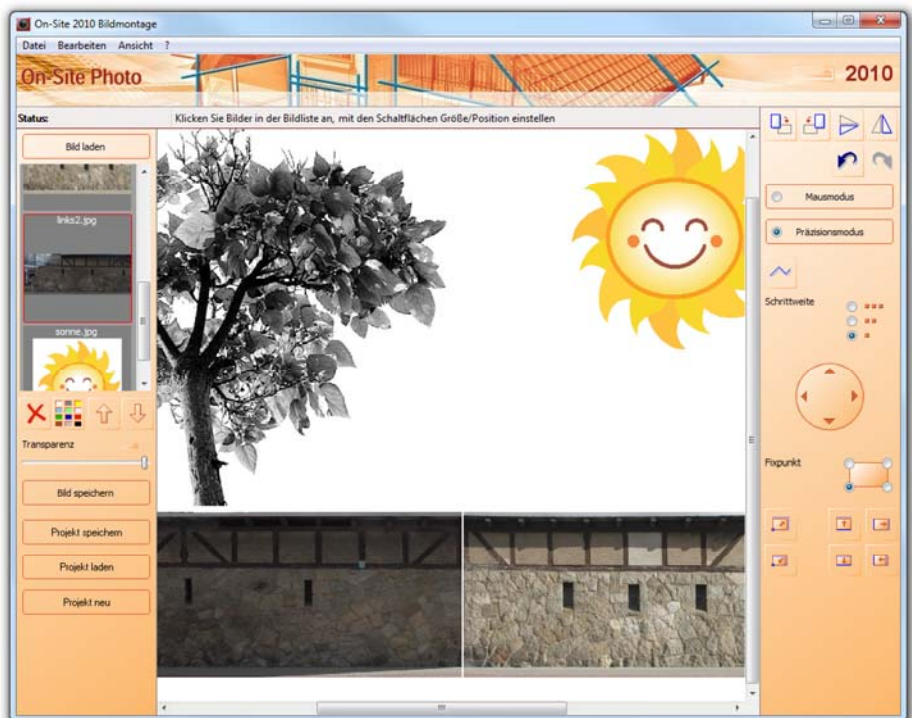
Photo Montage

### Photo Montage

The Photo Montage is a completely new, independent program. Images can be assembled precisely and easily to an overall image using specific commands. The overall image is saved with a high resolution and is then available for further work.

### System requirements

- ▶ Windows XP/Vista/7
- ▶ Minimum 1 GHz processor,
- ▶ Main memory minimum 512 MB RAM,
- ▶ At least 1024x768 pixels,
- ▶ At least 16bit colour depth,
- ▶ 400MB hard disk capacity,
- ▶ CD-ROM for installation



### Import of PDF files

In addition to a high amount of image formats **On-Site Photo 2010** can directly import PDF files now. During this process the PDF data are automatically converted into images and processed.